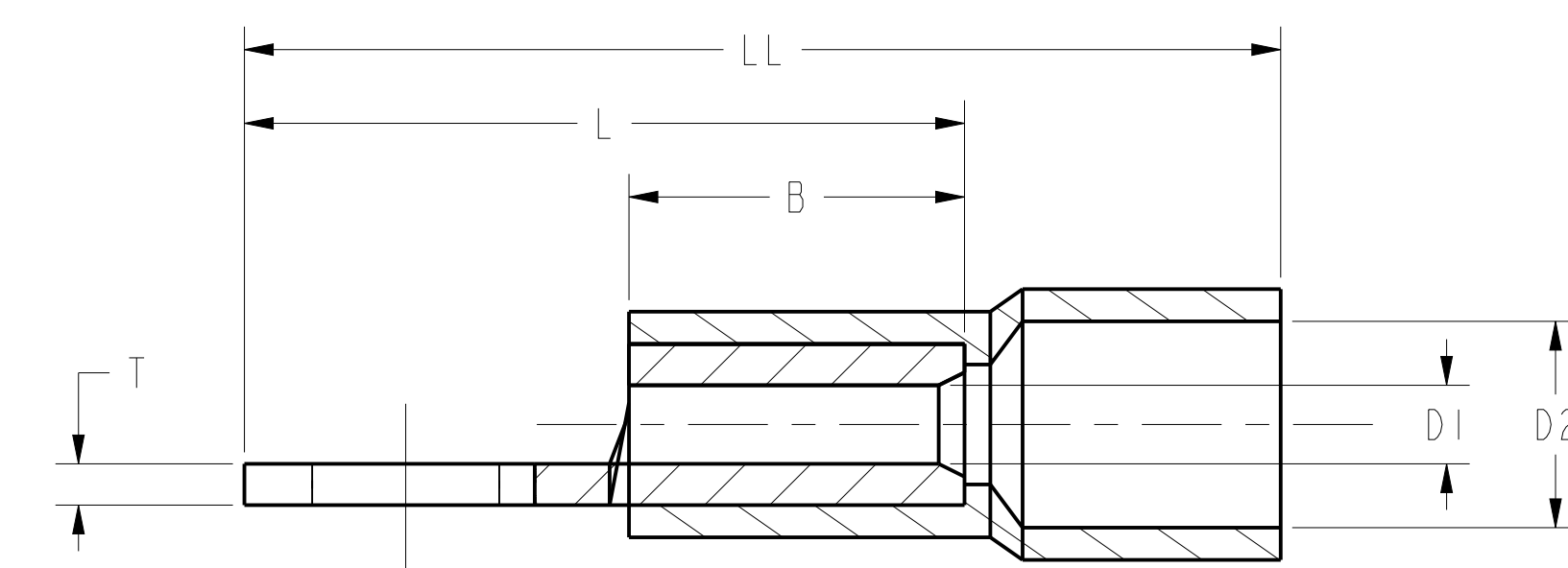
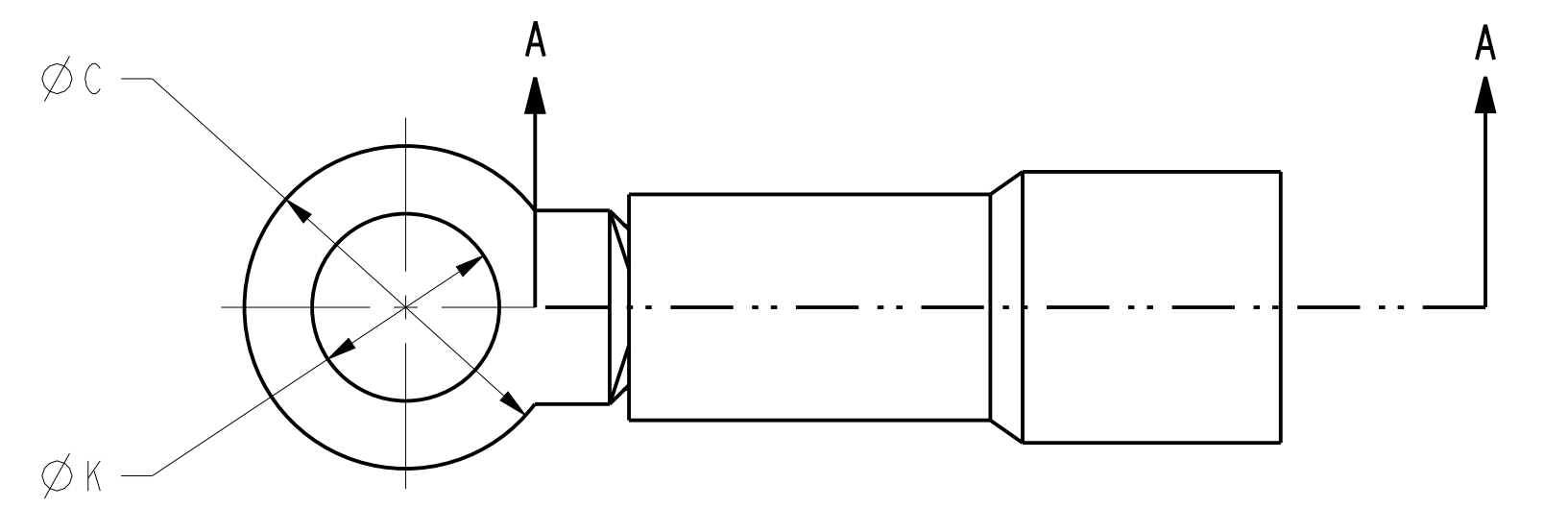


COLOUR CODE	CONDUCTOR SIZE (AWG)	D1 MAXIMUM WIRE DIAMETER	MAXIMUM STUD SIZE		CATALOG NUMBER			C (NOMINAL)	K (NOMINAL)	L +.000 -.030 [+0,00 -0,76]	LL +.000 -.050 [+0,00 -1,27]	T ±.005 [±0,30]	B +.000 -.030 [+0,00 -0,76]	D2 MAXIMUM INSULATION DIAMETER	INSTALLATION TOOL
			IMPERIAL	METRIC (mm)	BAG PACK	BOX PACK	BULK PACK								
RED	22-16	.061 [1,55]	#2	2	-----	TP182	BBA182	.218 [5,54]	.093 [2,36] .119 [3,02]	.528 [13,41]	.773 [19,63]	.032 [0,81]	.260 [6,60]	.160 [4,06]	
			#4	2,5	-----	TP184	BBA184	.250 [6,35]	.145 [3,68]	.558 [14,17]	.803 [20,40]				
			#6	3,5	CR100	TP186	BBA186								
			#8	4	CR101	TP188	BBA188	.312 [7,92]	.171 [4,34] .204 [5,18]	.669 [16,99]	.914 [23,22]				
			#10	5	CR102	TP1810	BBA1810	.400 [10,16]	.271 [6,88]	.808 [20,52]	1.053 [26,75]				
			1/4"	6,5	-----	TP1814	BBA1814								
			5/16"	8	-----	TP18516	BBA18516								
BLUE	16-14	.077 [1,96]	#2	2	-----	TP142	BBA142	.218 [5,54]	.093 [2,36] .119 [3,02]	.528 [13,41]	.773 [19,63]	.032 [0,81]	.260 [6,60]	.190 [4,83]	MR8891C MR8891I Y1022
			#4	2,5	-----	TP144	BBA144	.250 [6,35]	.145 [3,68]	.558 [14,17]	.803 [20,40]				
			#6	3,5	CR103	TP146	BBA146								
			#8	4	CR104	TP148	BBA148	.312 [7,92]	.171 [4,34] .204 [5,18]	.669 [16,99]	.914 [23,22]				
			#10	5	CR105	TP1410	BBA1410	.400 [10,16]	.271 [6,88]	.808 [20,52]	1.053 [26,75]				
			1/4"	6,5	CR106	TP1414	BBA1414								
			5/16"	8	-----	TP14516	BBA14516								
YELLOW	12-10	.124 [3,15]	#4	2,5	-----	TP104	BBA104	.312 [7,92]	.119 [3,02] .145 [3,68]	.676 [17,17]	.951 [24,16]	.040 [1,02]	.340 [8,64]	.280 [7,11]	
			#6	3,5	-----	TP106	BBA106	.358 [9,09]	.171 [4,34] .204 [5,18]	.772 [19,61]	1.038 [26,37]				
			#8	4	CR107	TP108	BBA108								
			#10	5	CR108	TP1010	BBA1010	.531 [13,49]	.271 [6,88] .330 [8,38] .409 [10,39]	.988 [25,10]	1.263 [32,00]				
			1/4"	6,5	CR109	TP1014	BBA1014								
			5/16"	8	-----	TP10516	BBA10516								
			3/8"	10	-----	TP1038	BBA1038			1.036 [26,31]	1.311 [33,30]				

NO. OF DECIMAL PLACES		TOLERANCES UNLESS OTHERWISE SPECIFIED	
METRIC	INCH	METRIC	INCH
1	2	±.8	±.03
2	3	±.38	±.015
ANGLES		±.0° - 30°	



SECTION A-A

- NOTES:
- DIMENSIONS IN BRACKETS [] ARE IN MILLIMETERS ROUNDED OFF TO THE NEAREST MILLIMETER, UNLESS OTHERWISE NOTED AND ARE FOR REFERENCE ONLY.
 - PURE ELECTROLYTIC COPPER, TIN PLATED.
 - BRAZED SEAM, COMPLETE CIRCULAR BARREL.
 - ZONE ANNEALING OFFERS SOFT BARREL FOR EASY CRIMPING WITHOUT LOSING TEMPER OF PAD.
 - LISTED, FILE No. LR 38612.
 - LISTED, FILE No. E 68345

INSULATED BRAZED TERMINAL			
ITEM NO:	--		
CAT. NO:	CR, TP, BBA		
DRAWN BY:			
CHECKER:			
DSN APPVL:	--		
MFG APPVL:	--		
QA APPVL:	--		
MKT APPVL:	--		
PROD FAM:	--	DRAWING NO	REV
PROJECT #:	--	SIZE	
DOCUMENT TYPE:	Sales	CSD032954-01	A
REL LEVEL:	Released	D	



REV: PFC0200